

PRODUCT DATA SHEET

CONDENSER TYPE CD

TAILOR-MADE TO FIT SPECIFIC REQUIREMENTS FOR FILLING VOLUME AND DESIGN PRESSURE

We can assist you with coils featuring pipe dimensions ranging from Ø5 mm up to Ø21 mm, utilizing combinations of geometries, fins, and materials that optimize the outcome for your operational scenario.

A good choice of coils always starts with a good dialogue. We listen attentively and present solutions that match both your requirements and those made by the authorities.

With over fifty years of experience, we identify coils with the right quality, lifespan, and cost-effectiveness.

CALCULATE COILS YOURSELF

Use AC MasterSelection, which is our proprietary calculation program.

Register as a user
aircoil.se/en/calculation-program



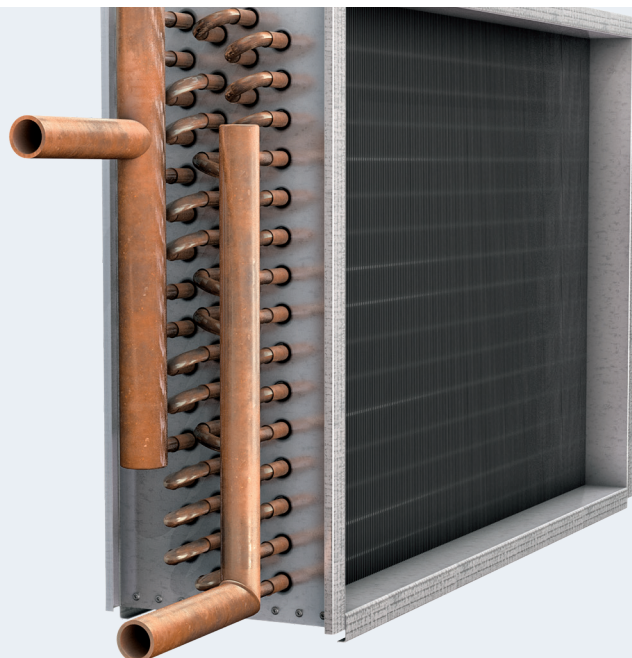
CONDENSER COIL CD

AIRCOIL CONDENSER COIL TYPE CD

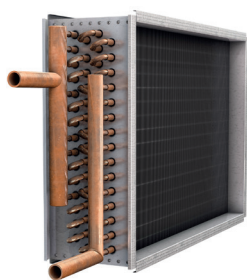
For installing in ducts with a guide or flange connection, or for embedding in a unit.

Standard configuration with copper tubes, aluminium fins and hot galvanised sheet steel casing.

Many other material variations are available and manufactured according to needs and preferences.

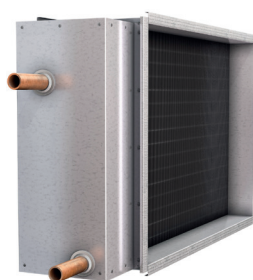


THE COILS ARE AVAILABLE IN THREE VERSIONS



TYPE A

Open ends with visible headers and tube bends outside the connection dimensions.



TYPE B

Covered ends with capped headers and tube bends outside the connection dimensions.



TYPE C

Covered ends with capped headers and tube bends inside the connection dimensions.

CONSTRUCTION DATA

TYPE A & B	TIGHTNESS CLASS B
TYPE C	TIGHTNESS CLASS C

The condenser is built and tested in accordance with the applicable requirements for the cooling medium and design pressure chosen.

The condenser is internally dried, filled with protective gas and sealed. Copper hot gas and fluid connection for soldering.

The coil's construction depth varies according to the number of tube rows, as stated in the technical calculation.

The coils are supplied as standard for vertical installation - horizontal airflow. The coils are supplied labeled according to the AMA VVS & KYL 16 standard.

The A, B and C models can all be equipped with either a Guide (G) or Flange (F).

